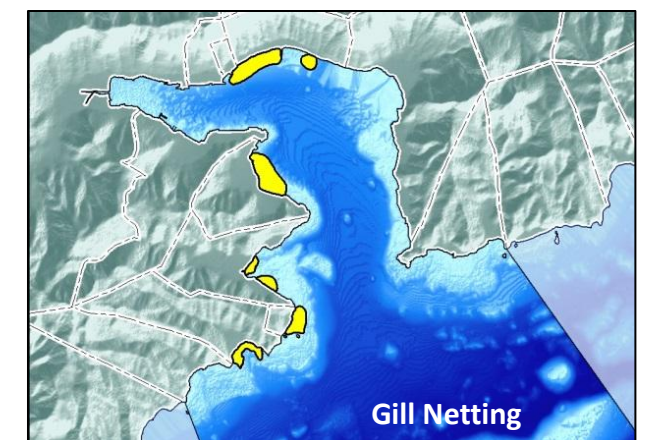
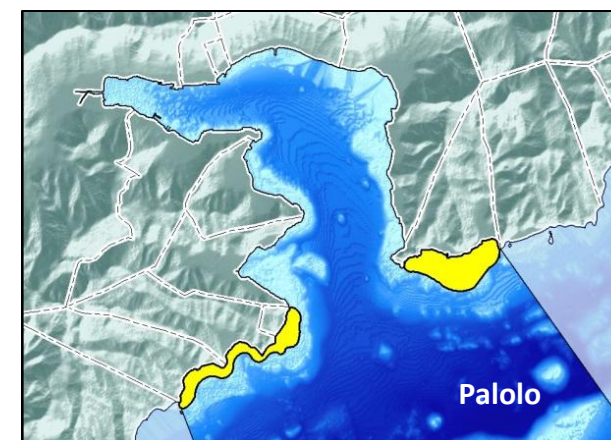
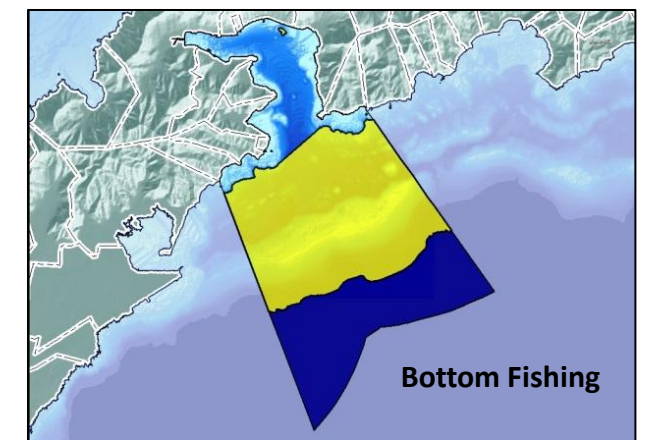
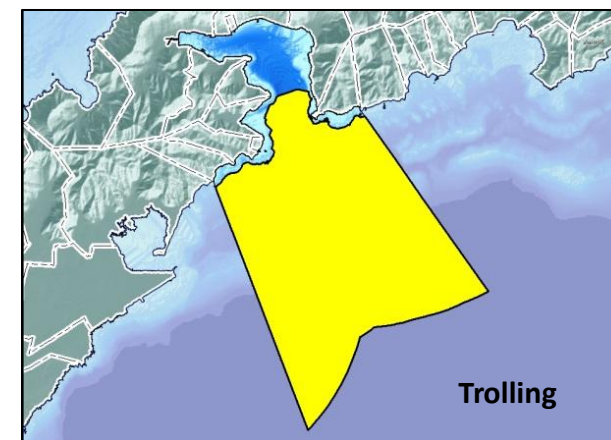
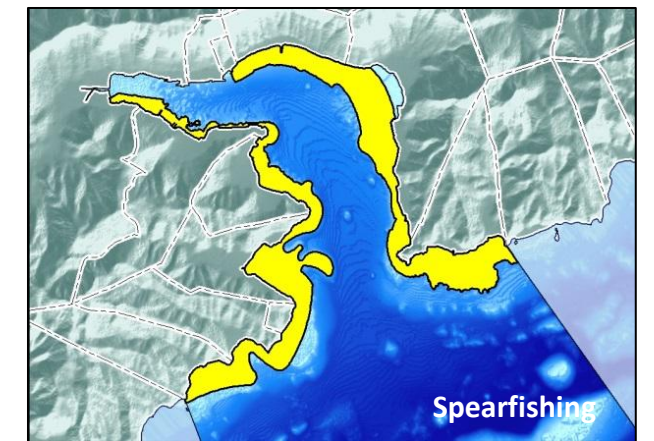
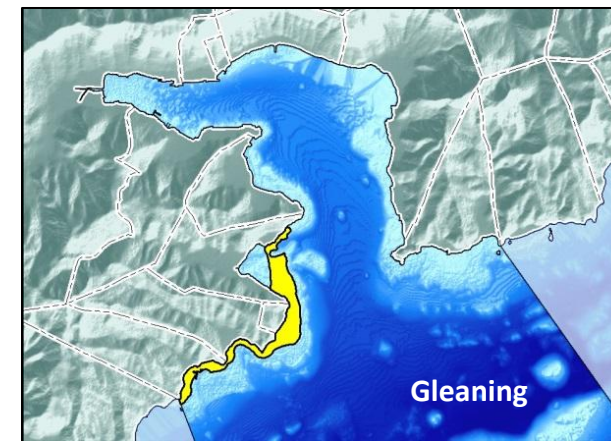
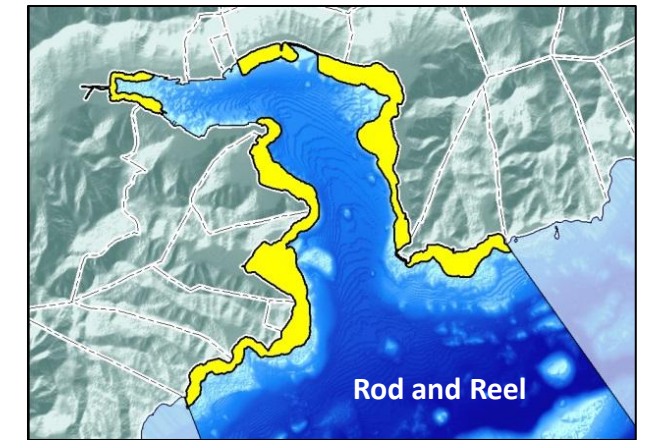
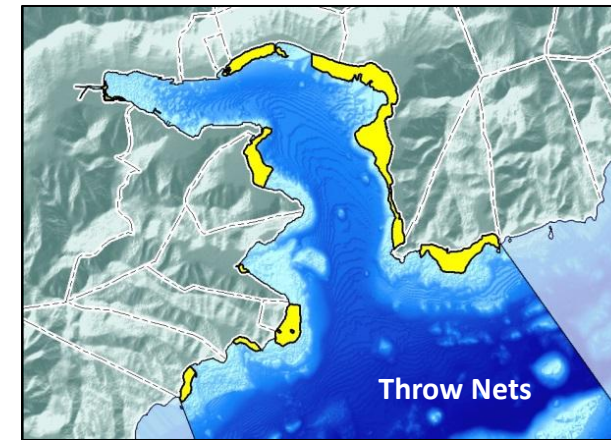
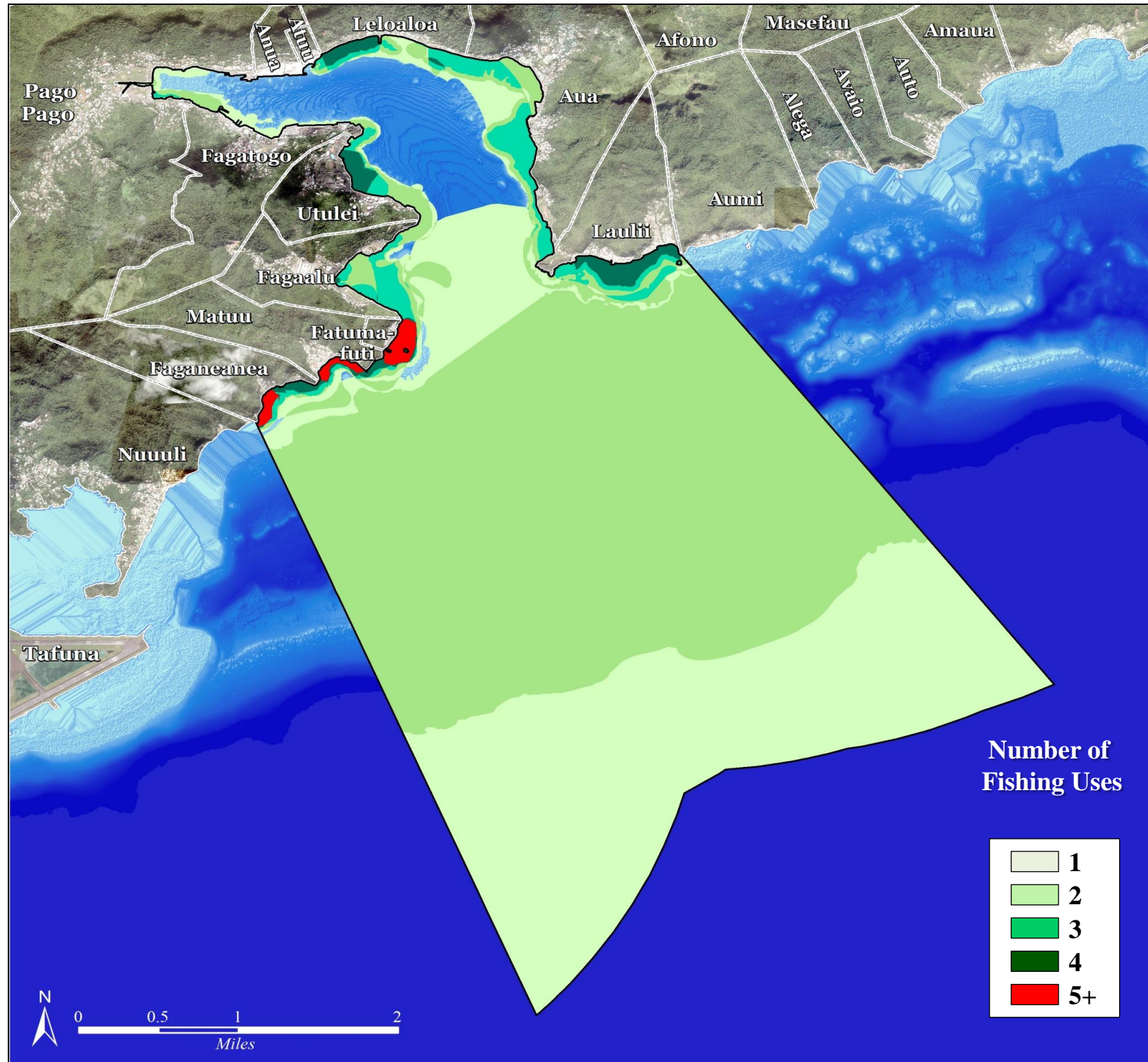


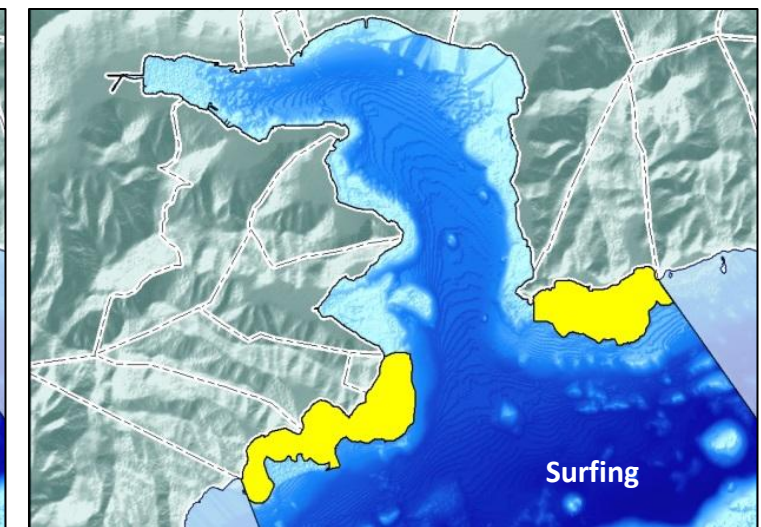
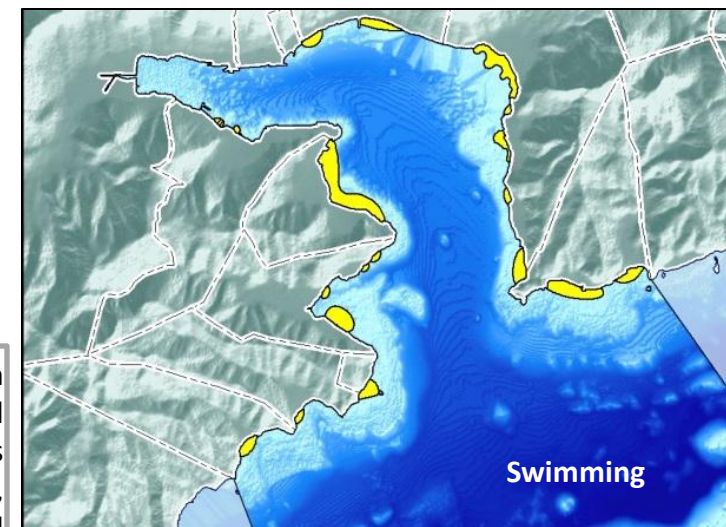
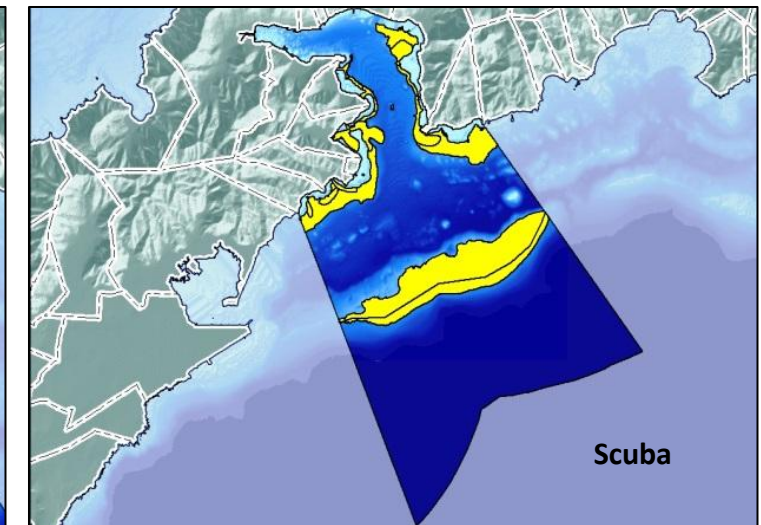
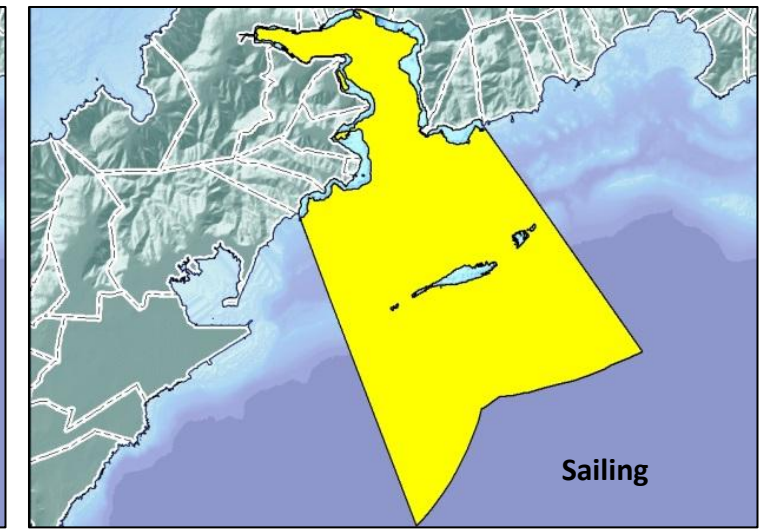
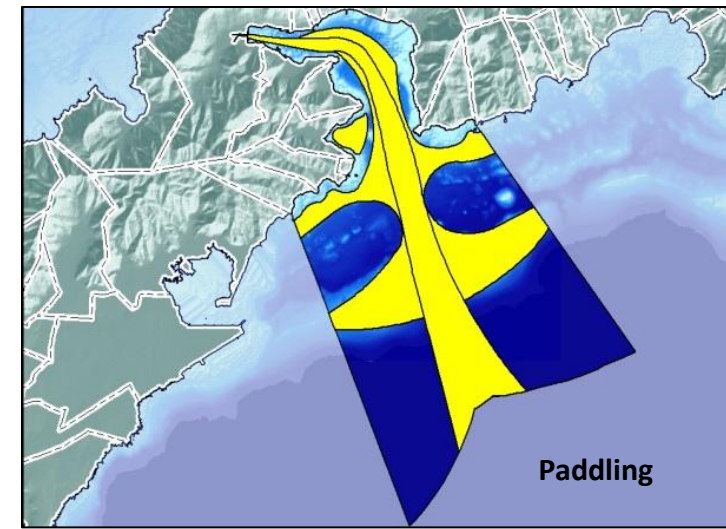
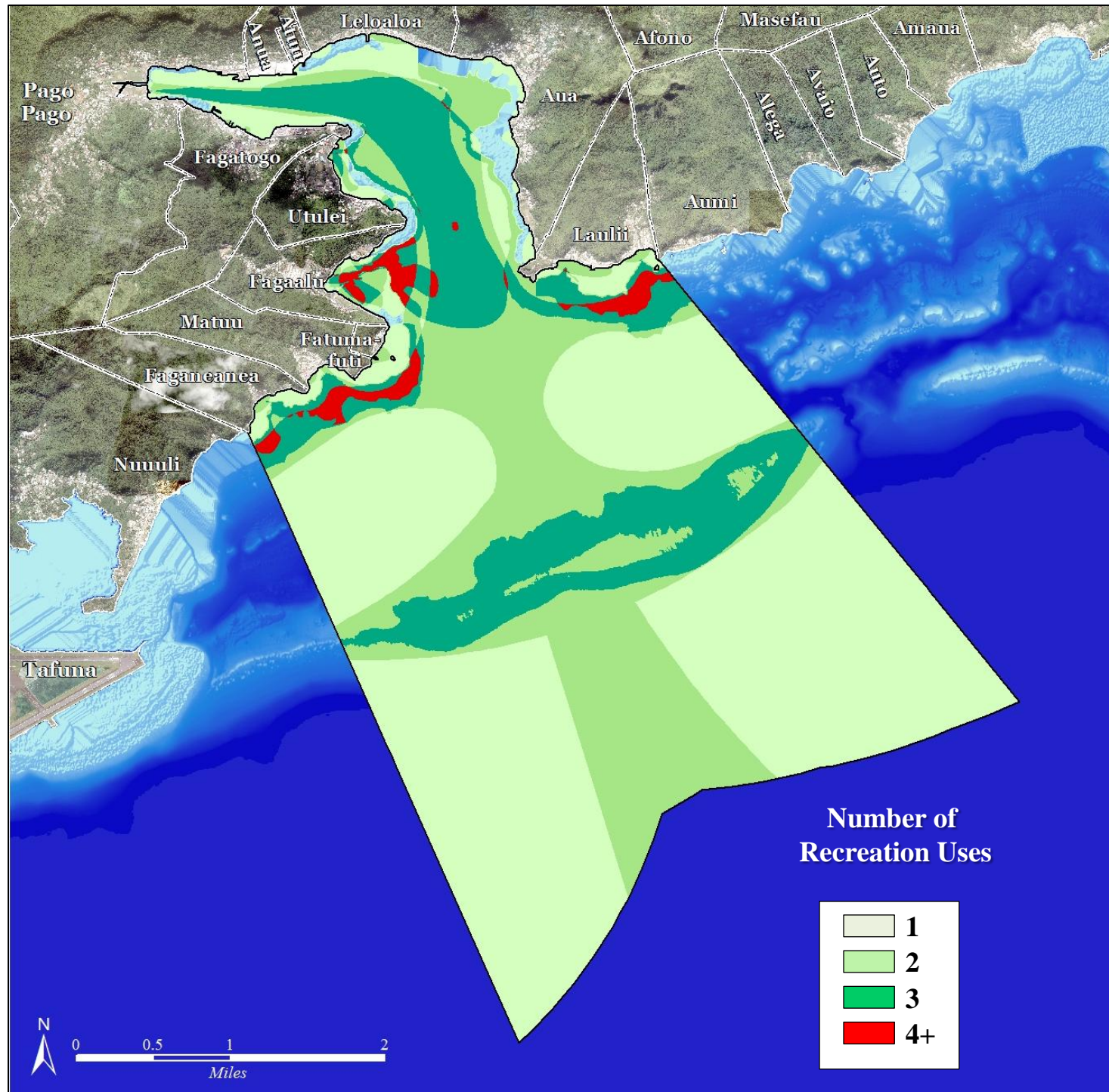
# FAGALOA COASTAL USES MAPPING - AMERICAN SAMOA 2012 - AGGREGATED FISHING USES



These maps contains cartographic products derived from the American Samoa Coastal Use Mapping project conducted in Pago Pago, American Samoa in July 2012. Data was obtained through a participatory GIS workshop designed to gather spatial data on human uses of the coastal and near shore marine environment in the greater Pago Pago Harbor region known as Fagaloa. Participants represented a wide range of backgrounds relating to marine resources: resource stewards, fishermen, tourism industry experts, natural resource managers, educators, cultural practitioners, scientists, village residents, and local business owners. This effort was undertaken as a partnership between multiple agencies including NOAA Pacific Islands Regional Office (PIRO), NOAA Pacific Services Center (PSC), American Samoa Department of Commerce Coastal Management Program (ASCMP), the American Samoa Department of Marine and Wildlife Resources (DMWR) and American Samoa Environmental Protection Agency (ASEPA). For more information regarding the American Samoa Coastal Uses Mapping project or process, contact: Arielle Levine - [Arielle.Levine@noaa.gov](mailto:Arielle.Levine@noaa.gov).



# FAGALOA COASTAL USES MAPPING - AMERICAN SAMOA 2012



These maps contains cartographic products derived from the American Samoa Coastal Use Mapping project conducted in Pago Pago, American Samoa in July 2012. Data was obtained through a participatory GIS workshop designed to gather spatial data on human uses of the coastal and near shore marine environment in the greater Pago Pago Harbor region known as Fagaloa. Participants represented a wide range of backgrounds relating to marine resources: resource stewards, fishermen, tourism industry experts, natural resource managers, educators, cultural practitioners, scientists, village residents, and local business owners. This effort was undertaken as a partnership between multiple agencies including NOAA Pacific Islands Regional Office (PIRO), NOAA Pacific Services Center (PSC), American Samoa Department of Commerce Coastal Management Program (ASCMP), the American Samoa Department of Marine and Wildlife Resources (DMWR) and American Samoa Environmental Protection Agency (ASEPA). For more information regarding the American Samoa Coastal Uses Mapping project or process, contact: Arielle Levine - Arielle.Levine@noaa.gov.

## AGGREGATED RECREATION USES

