

CONNECTIONS BETWEEN CORAL REEFS & COASTAL COMMUNITIES

NOAA's Coral Reef Conservation Program monitors the biological, socioeconomic, and climate conditions of US coral reefs and communities through the National Coral Reef Monitoring Program (NCRMP). The Socioeconomic Component of the NCRMP collects and monitors human use of coral reef resources, knowledge, attitudes, and perceptions of coral reefs and coral reef management, and demographics of the populations living in coral reef areas. The takeaways below are based on resident survey results from American Samoa's second monitoring cycle.

TAKEAWAYS FROM AMERICAN SAMOA 2021

MANAGEMENT SUPPORT

Most residents support management strategies to protect coral reefs.



ACTIVITY PARTICIPATION

Swimming Beach camping Beach recreation

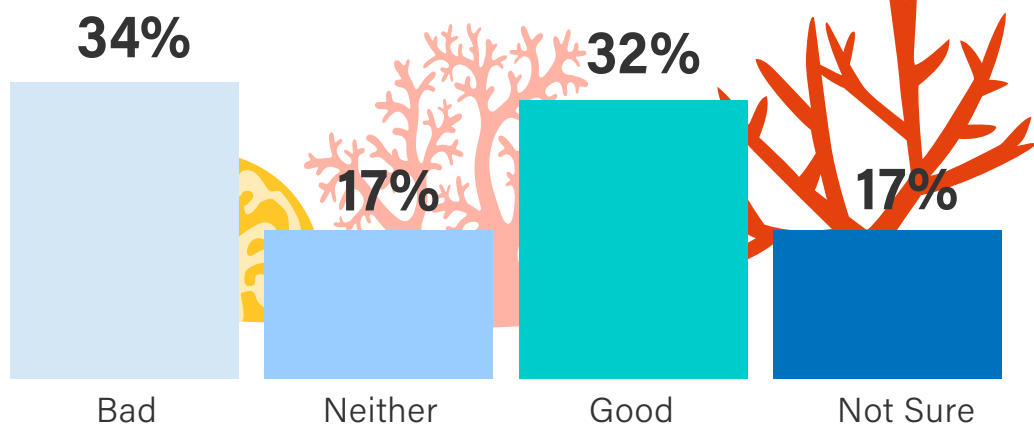


CORAL REEF IMPORTANCE

Nearly all residents agree that coral reefs are important to the culture of American Samoa and protect American Samoa from erosion and natural disasters.

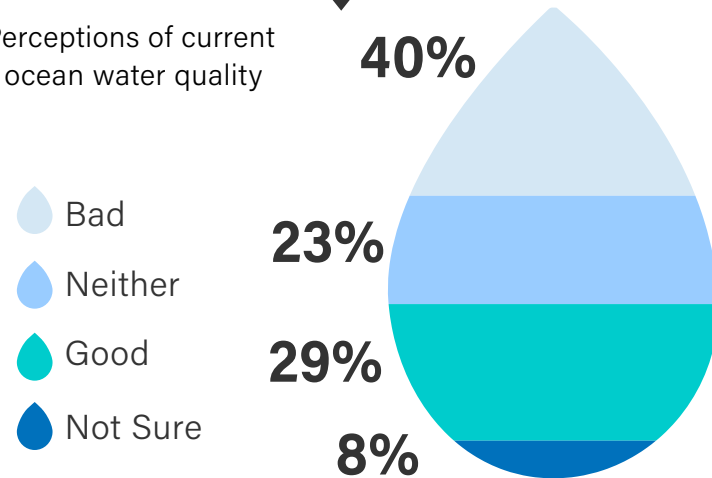
AMOUNT OF CORAL

Perceptions of current amount of live coral



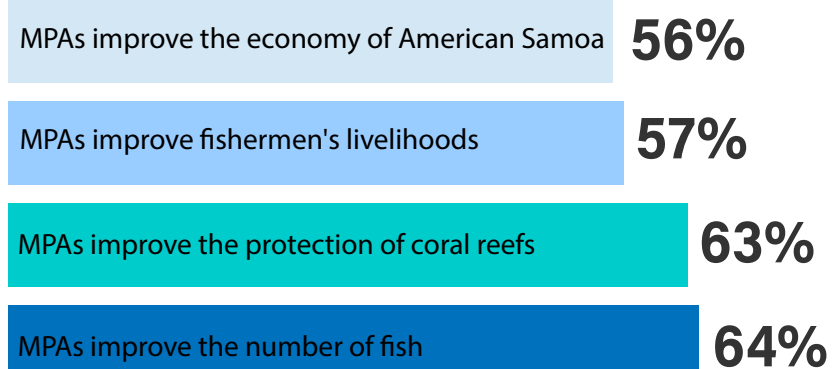
OCEAN WATER QUALITY

Perceptions of current ocean water quality



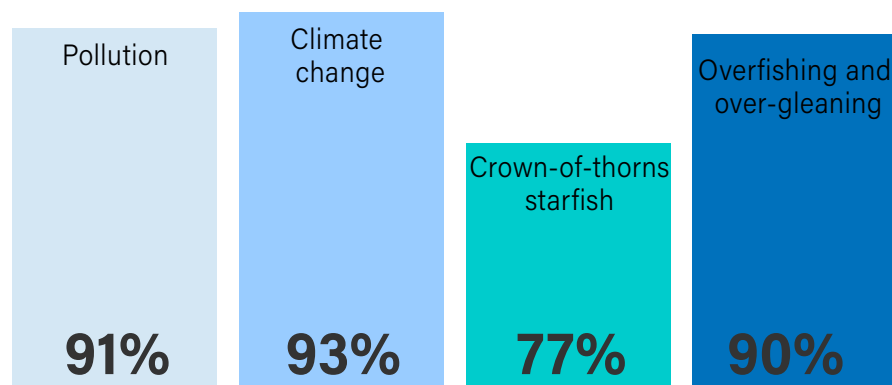
BENEFITS OF MPAs

The majority of residents perceive improvements from Marine Protected Areas.



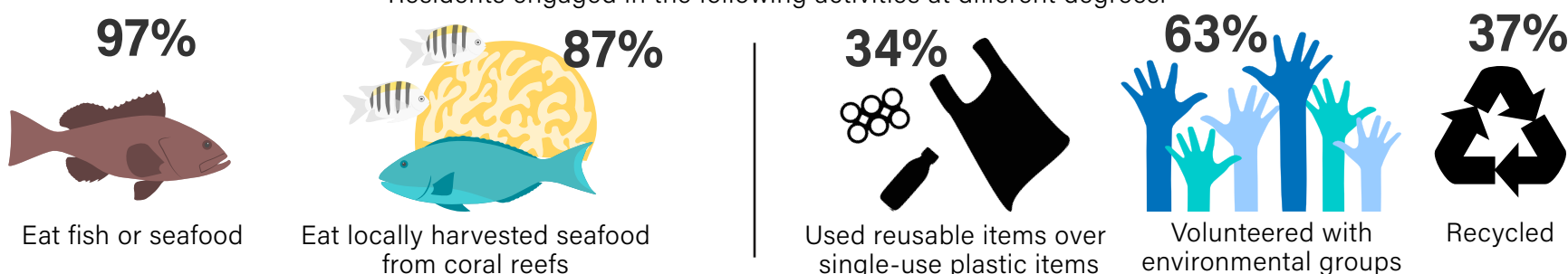
THREAT FAMILIARITY

There are high degrees of familiarity with some threats to coral reefs.



SEAFOOD CONSUMPTION AND ENVIRONMENTAL BEHAVIORS

Residents engaged in the following activities at different degrees.



All percentages have been rounded to the nearest whole number. An in-person survey was conducted within a random sample of residents aged eighteen and older in 20 villages across Tutuila and the Manu'a Islands between May and September 2021. Surveys were offered in Samoan and English. A total of 1,318 surveys were completed with a response rate of 19%. This survey was conducted for American Samoa's second socioeconomic NCRMP monitoring cycle, and is used in conjunction with the collection of existing secondary data to monitor the socioeconomic conditions of U.S. coral jurisdictions over time.

To download the data for these surveys, visit <https://www.ncei.noaa.gov/archive/accession/0276137>

For more information, please see the NCRMP Socioeconomic Component project page at <http://www.coris.noaa.gov/monitoring/socioeconomic.html>

